

# Michigan Primary Voter Guide

## 2024 P-A-L Ballot Proposals

by Detroit Documenters Colleen Cirocco, Kayleigh Lickliter and Sonja Stuckey. Outlier Media's Laura Herberg contributed to this story.

Voters are starting to talk about the choices they'll have to make in this year's elections. Detroit voters will see three proposals on their Aug. 6 ballot. For a quick overview, check out these three short explainers from Detroit Documenters.

### Proposition P, Wayne County Parks Millage

by Sonja Stuckey

Here's what you need to know about Proposition P, the Parks Millage Renewal.

#### What is Proposition P?

Proposition P is a recurring property tax levy (millage) to provide ongoing funding to Wayne County parks and recreational facilities.

#### Ballot language

"To renew the millage authorized in 2020, shall Wayne County levy this millage at the 2023 rollback rate of 0.2442 mills (about \$0.24 per \$1,000 of taxable valuation) for five more years (2026 through 2030) to continue to improve and operate several parks and related facilities, including Hines Park, Elizabeth Park, Wayne County Family Aquatic Center at Chandler Park, and improvements to municipal parks in the 43 communities as provided in an implementing ordinance through an annual allocation by commission district of the greater of \$50,000 or 15% of the total funds generated from that district, on the condition that, for any year for which this continued levy would be imposed, Wayne County must budget from other sources an amount equal to its 1995-1996 fiscal year appropriation for parks? Based upon the total estimated 2026 taxable value of \$59,252,807,563, this renewal is projected to generate \$14,469,536 in 2026."

#### What's the history?

Wayne County voters approved the original parks millage in 1996. It has been renewed several times since then. What would a yes vote mean? A yes vote would reauthorize the millage at 0.2442 mills. That is equal to just over 24 cents per \$1,000 of taxable property value.



Proposition P asks voters whether to renew Wayne County's parks millage. Photo: Grb/iStock

Taxable value is half the assessed value of your property. If your home is assessed at \$100,000, for example, the taxable value would be \$50,000. In that case, the parks millage would add about \$12 to your property tax bill.

The millage would be in place from 2026-2030. This tax renewal is projected to generate about \$14 million in 2026.

#### What would the money be used for?

Money from the millage is used to fund capital improvements, environmental and infrastructure projects for the 5,600 acres of parks in Wayne County.

#### How can I get more information or get involved?

Residents can vote in the primary election on Aug. 6. Proposition P is listed at the bottom of the ballot (or on the back) under the proposal section. Check your local voting precinct or the Wayne County Clerk's Elections Division at 313-224-5525 to find out how to vote by absentee ballot or in person at your local precinct. For detailed instructions on how to cast your vote, visit [www.MichiganVoting.org](http://www.MichiganVoting.org).

Get involved with Wayne County parks initiatives through contacting the Friends of Wayne County Parks through its contact page or at [FriendsOfWCP@aol.com](mailto:FriendsOfWCP@aol.com).

Sonja Stuckey is a native Detroit, retired from 25 years as an early childhood educator. Her heart lies in community reporting, sharing information and resources to help empower other Detroiters.



### Proposition A, The Auditor Selection Amendment

by Kayleigh Lickliter

Here's what you need to know about Proposition A, the Auditor Selection Amendment.

#### What is Proposition A?

Proposition A would remove a requirement in the Wayne County charter that it find a new financial auditor at least every eight years. If approved, any qualified firm could be awarded a contract for auditing services when the contract is competitively bid.



Proposition A will appear on Wayne County voters' ballots for the state primary on Aug. 6. Photo: Outlier Media

#### Ballot language

"Shall the Wayne County Charter Section 3.119 (e) be amended in part to allow the County's independent external auditor, selected by competitive bid, to serve for a term of three years or more?"

#### What's the history?

Voters approved a ballot question in 1996 that transferred the responsibility for hiring an outside firm from the Wayne County executive to the auditor general.

The mandatory rotation of audit firms was a reform to enhance auditor independence and audit quality. "At the time the charter was first drafted, it was a different industry," said Mark Abbo, former Wayne County chief financial officer. More firms were involved in government auditing work when the charter was written. "It's really unusual to have a charter requirement that requires a rotation or a new auditor be selected every eight years."

Voters rejected a proposal similar to the one on this year's ballot by a slim margin in 2012.

#### What else should I know?

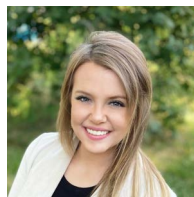
Plante Moran has been Wayne County's external auditor since 2017. Based on the current provisions of the county charter, the auditing firm wouldn't be able to continue providing external auditing services beyond this year.

The Government Finance Officers Association's best practices indicates a concern that the mandatory rotation requirement could result in higher fees and hiring a firm that doesn't have the capacity.

#### How can I get more information or get involved?

Residents can vote in the primary election on Aug. 6. Proposition A is listed at the bottom of the ballot (or on the back) under the proposal section. Check your local voting precinct or the Wayne County Clerk's Elections Division at 313-224-5525 to find out how to vote by absentee ballot or in person at your local precinct. For detailed instructions on how to cast your vote, visit [www.MichiganVoting.org](http://www.MichiganVoting.org).

Kayleigh Lickliter is a Detroit Documenter and freelancer for BridgeDetroit.



### Proposal L, Detroit Public Library Millage

by Colleen Cirocco

Here's what you need to know about Proposal L, the Library Operating Millage Renewal.

#### What is Proposal L?

Proposal L would renew a tax levy that makes up the majority of the Detroit Public Library's budget until 2035. The current voter-approved millage funds about 85% of the library's operating costs and expires on June 30, 2025. The ballot measure does not affect a separate, smaller statutory millage.



Proposal L asks voters whether to renew a Detroit Public Library millage. Photo: Outlier Media

The proposal would renew the current rate of

3.9943 mills, which is about \$3.99 for every \$1,000 of taxable value. This would be the same rate in effect since the last millage vote in 2014.

Taxable value is half of a property's appraised value. Someone who owns a home appraised for \$100,000, for example, would have a taxable value of \$50,000 and pay about \$200 a year toward the millage.

#### Ballot language

"Shall the tax limitation on taxable property for operating and maintaining the Detroit Public Libraries, be renewed for 3.9943 mills (\$3.9943 on each \$1,000.00 of taxable value) for 10 years (July 1, 2025 to June 30, 2035)? This renewal combines two millages that voters approved on August 5, 2014, which expires June 20, 2025. 3.9943 mills will raise an estimated revenue of \$42,000,000 the first year, if approved, and 100% collected."

#### What about tax capture?

There are two separate millages that support the library. One is a smaller "fixed" millage that collects 0.64 mills in property taxes. The DDA will still be able to capture taxes on that millage.

The much larger voter-approved millage would be exempt from tax capture if it passes and takes effect on July 1, 2025. That would unlock an additional \$3.2 million in the next fiscal year for the library.

#### Library facts

The Detroit Public Library is a place for people of all ages and backgrounds to connect with others and get access to the information and services they need, all for free. The library offers resources including computers, internet connection, eye exams, tax and legal help, movies, after-school programs, job search assistance, historical collections and of course, lots and lots of books.

The Detroit Public Library, which first opened in 1865, has 22 branches: its Main Branch and 21 neighborhood branches. Most of its buildings require extensive repairs, and three branches have been closed for years.

#### How can residents get more information or get involved?

Residents can vote in the primary election on Aug. 6. Proposal L is listed at the bottom of the ballot (or on the back) under the proposal section. Check your local voting precinct or the Wayne County Clerk's Elections Division at 313-224-5525 to find out how to vote by absentee ballot or in person at your local precinct. For detailed instructions on how to cast your vote, visit [www.MichiganVoting.org](http://www.MichiganVoting.org).

Visit [DetroitPublicLibrary.org](http://DetroitPublicLibrary.org) to learn more about Proposal L and explore the library's resources and events.

Colleen Cirocco is an archivist living in Southwest Detroit. She has a Masters in Library and Information Science from Wayne State University.



Vote

# Guía para votantes

## Michigan August 6 primary: What to know about absentee ballots, early voting

By Janelle D. James, Bridge Detroit

If you're one of the nearly one million Michigan voters who requested an absentee ballot for the Aug. 6 primary but haven't yet returned it, it's probably too late to mail it now, according to the Michigan Secretary of State.

Instead, if you still want to vote absentee, you should return your ballot to a drop box or your local clerk's office. You can also bring your absentee ballot to an early-voting site ([mvic.sos.state.mi.us/voter](http://mvic.sos.state.mi.us/voter)) before Election Day.

But here's the important thing to know: Your absentee ballot has to reach your clerk by the time polls close at 8 p.m. on Election Day for it to count, and you don't want to risk potential mail delays.

As of Thursday, 1,589,363 Michigan voters had been sent absentee ballots, and 634,898 had been returned, according to the state. That means 954,465 voters have not yet returned ballots they requested.

With the primary election fast approaching, here's what else to know:

### Voter registration

You can still register to vote through Election Day, but you have to do it in person at this point. Michigan law prohibits residents from registering to vote online or by mail within 14 days of the election. ([mvic.sos.state.mi.us/home/RegisterToVote/#how](http://mvic.sos.state.mi.us/home/RegisterToVote/#how))

Likewise, voters who are already registered but want to update their registration must do it in person at their local clerk's office.

Michigan now allows same-day voter registration until 8 p.m. on Election Day at your local clerk's office.

### In-person voting

Michigan's new early voting period begins Saturday, July 27, and runs through Aug. 4. If you choose this option, you can fill out a ballot and feed it into a tabulator to see it counted — just like Election Day. Find your early voting site at [mvic.sos.state.mi.us/vote](http://mvic.sos.state.mi.us/vote)

If you want to vote on Election Day itself, remember that polls are open from 7 a.m. to 8 p.m. As long as you're in line by then, your vote will count. Find your polling place at the right.

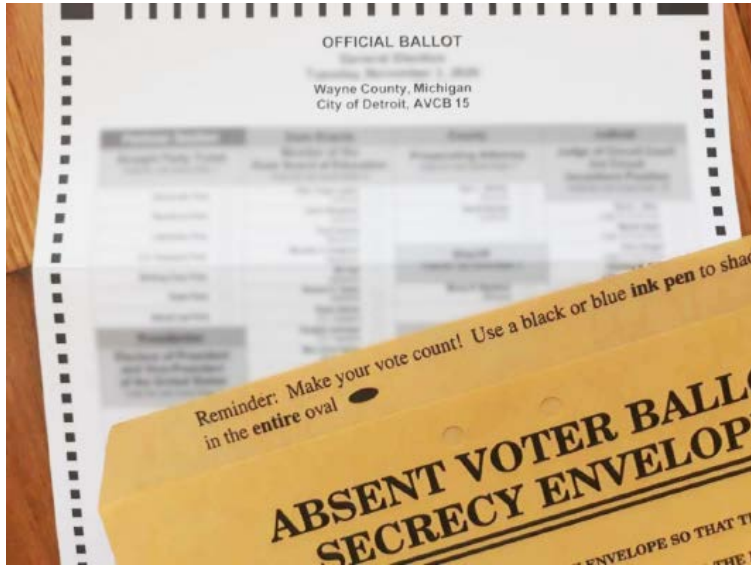
If you requested an absentee ballot but want to vote in person instead, you can use your ballot at an early voting site or "spoil" it to get a new one on site.

Janelle D. James covers breaking news at Bridge Michigan.



## Votaciones Primarias del 6 de agosto en Michigan: lo que hay que saber sobre el voto ausente y anticipado.

Por Janelle D. James, Bridge Detroit



More than 1.5 million Michigan voters have been sent an absentee ballot and more than 634,000 have already been returned ahead of the August 6 primary election. Photo: Shutterstock

Más de 1,5 millones de votantes de Michigan han recibido una papeleta por voto ausente, habiendo sido devueltas más de 634.000 antes de las elecciones primarias del 6 de agosto. Fuente: Shutterstock

### Some basics about voting

To be eligible to vote in Michigan, you must:

- Be a citizen of the U.S.
- Have lived in the city or township they are registering in for at least 30 days before the election
- Not be serving a jail or prison sentence
- Be at least 18 years old
- If you're going to vote in person, bring photo identification, because you'll be asked to show it. If you're registered to vote but don't have an ID or forget to bring it, you can still vote by signing an affidavit attesting to your identity.

- Michigan's August 6 election includes primaries for U.S. Senate, U.S. House, the state House and more
- Over 1.5 million absentee ballots have been sent to Michigan voters and more than 634,000 have been returned
- Michiganans can still register to vote and have multiple options to participate in the primary, including an early voting period



Reprinted from BridgeDetroit.com

## Michigan Primary Election Early Voting sites in and near Southwest Detroit

### CITY CLERK'S OFFICE at the Coleman A Young Municipal Center

2 Woodward Ave., Ste. 106 Detroit, Michigan 48226

#### Open:

Friday 08/02: 9:00AM to 5:00PM  
Saturday 08/03: 9:00AM to 5:00PM  
Sunday 08/04: 9:00AM to 5:00PM  
Handicap Accessible

### CLARK PARK

1130 Clark Ave. Detroit, Michigan 48209

#### Open:

Thursday 08/01: 9:00AM to 5:00PM  
Friday 08/02: 9:00AM to 5:00PM  
Saturday 08/03: 9:00AM to 5:00PM  
Sunday 08/04: 9:00AM to 5:00PM  
Handicap Accessible

### DEPARTMENT OF ELECTIONS

2978 W. Grand Blvd. Detroit, Michigan 48202

#### Open:

Thursday 08/01: 9:00AM to 5:00PM  
Friday 08/02: 9:00AM to 5:00PM  
Saturday 08/03: 9:00AM to 5:00PM  
Sunday 08/04: 9:00AM to 5:00PM  
Handicap Accessible

### KEMENY RECREATION CENTER

2260 S. Fort Detroit, Michigan 48217

#### Open:

Thursday 08/01: 9:00AM to 5:00PM  
Friday 08/02: 9:00AM to 5:00PM  
Saturday 08/03: 9:00AM to 5:00PM  
Sunday 08/04: 9:00AM to 5:00PM  
Handicap Accessible

Más de 1,5 millones de votantes de Michigan han recibido una papeleta por voto ausente, habiendo sido devueltas más de 634.000 antes de las elecciones primarias del 6 de agosto.

- Las elecciones del 6 de agosto en Michigan incluyen las primarias para el Senado de los EE. UU., la Cámara de Representantes de los EE. UU., la Cámara de Representantes estatales, etc.
- Se han enviado más de 1,5 millones de boletas electorales por voto ausente en Michigan, siendo devueltas a la fecha más de 634.000.
- Los habitantes de Michigan aún pueden registrarse, con múltiples opciones para participar en las elecciones, incluido el período de votación anticipada.

Si usted es uno de los casi 1 millón de votantes de Michigan que solicitaron una papeleta de voto ausente, para las primarias del 6 de agosto, pero aún no ha devuelto su voto, es posible que sea demasiado tarde para enviarlo por correo, de acuerdo al Secretario de Estado de Michigan.

Pero si aún desea votar en ausencia, debe devolver su papeleta en un buzón o en las oficinas de su ciudad. También puede llevar su papeleta de voto ausente, a un sitio de votación anticipada ([mvic.sos.state.mi.us/voter](http://mvic.sos.state.mi.us/voter)) antes del día de las elecciones.

Es importante tener en cuenta que su boleta electoral en ausencia, debe llegar a las oficinas de su ciudad antes del cierre de urnas a las 8 p. m. el día de las elecciones, evite correr el riesgo de demoras en el correo.

Hasta el jueves, se habían enviado 1.589.363 papeletas de voto ausente en Michigan y se habían devuelto 634.898, según el estado. Eso significa que 954.465 votantes aún no las han devuelto.

Con las elecciones primarias acercándose, esto es lo que debe saber:

### Registro de votantes

Puede registrarse para votar hasta el día de las elecciones, pero debe hacerlo en persona. La ley de Michigan prohíbe

a los residentes registrarse para votar en línea o por correo dentro de los 14 días previos a las elecciones. ([mvic.sos.state.mi.us/home/RegisterToVote/#how](http://mvic.sos.state.mi.us/home/RegisterToVote/#how))

Asimismo, los votantes que ya están registrados, pero desean actualizar su registro deberán hacerlo en persona en las oficinas municipales o de su ciudad.

Michigan ahora permite el registro de votantes el mismo día hasta las 8 p. m. del día de las elecciones, en las oficinas correspondientes.

### Votaciones en persona

El nuevo período de votación anticipada de Michigan comienza el sábado 27 de julio y se extiende hasta el 4 de agosto. Si elige esta opción, puede completar una papeleta y colocarla en un tabulador para contabilizarla, al igual que el día de la elección. Encuentre su sitio de votación anticipada [mvic.sos.state.mi.us/vote](http://mvic.sos.state.mi.us/vote)

Las urnas estarán abiertas de 7 a.m. a 8 p.m. el día de las elecciones y si está en la fila en ese momento, su voto cuenta. Encuentre su lugar de votación a la izquierda.

Si solicitó una boleta de voto ausente, pero desea votar en persona, puede usar su boleta en un sitio de votación anticipada o "anularla" para obtener una nueva en el sitio.

### Conceptos básicos sobre las elecciones

Para ser elegible para votar en Michigan, debe:

- Ser ciudadano de los EE. UU.
- Haber vivido en la ciudad o municipio en el que se está registrando, al menos 30 días antes de las elecciones.
- No estar cumpliendo una sentencia en prisión.
- Tener al menos 18 años de edad.

Para votar en persona, presente una identificación con fotografía. Si está registrado para votar, pero no tiene una identificación o la olvidó, aún puede votar firmando una declaración jurada que acredite su identidad.

Traducción Carmen Elena Luna

